

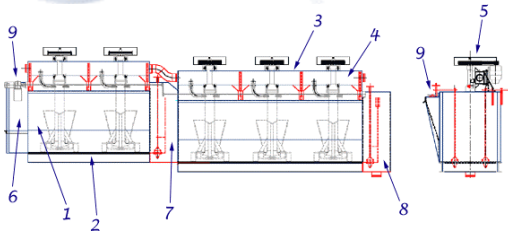
# WESTPRO flotation machines

## applications

Westpro's versatile FLOTATION MACHINES are specially developed for a vast range of applications.

- Mineral separation
- Industrial minerals
- Soil remediation
- Environmental

## components



### 1. Heavy Duty Tank Construction

- Mild steel with optional coatings
- Stainless steel (optional)
- I-Beam support structure on larger models

### 2. Removable Wear Liners

- Rubber covered bottom liners
- Abrasion resistant side liners

### 3. Superstructure

- Supports mechanisms
- Provides air header for open flow models

### 4. Mechanism

- Heavy-duty spindle bearing assembly
- Heavy-duty bearings
- Low maintenance
- Heavy constructed standpipes
- Urethane or rubber impeller and diffusers
- Special coating of all wetted parts (optional)

### 5. V-Belt Drive

- V-Belt sets
- Sheave sets
- Drive guards

**Westpro Equipment Company**  
 Suite 200 – 1200 North Federal Highway  
 Boca Raton, FL 33432  
 Tel: (561) 395-6955  
 Fax: (561) 395-7760  
 Toll Free: 1-877-WESTPRO (937-8776)  
 Email: [sales@westproequipment.com](mailto:sales@westproequipment.com)

## advantages

- Heavy-duty construction
- Low maintenance
- Efficient operation
- Replaceable wear components
- Single or double overflow

### 6. Feed Box

- Welded to tank for no leak operation
- Includes wear liners

### 7. Transition Box

- Controlled weir bar assembly
- Controlled dart valve assembly

### 8. Discharge Box

- Controlled weir bar assembly
- Controlled dart valve assembly
- Discharge nozzle

### 9. Froth Paddle Assembly (optional)

- Direct drive
- Solid shaft
- Poly blades
- Bearing support blocks

**Open flow or cell to cell configuration**

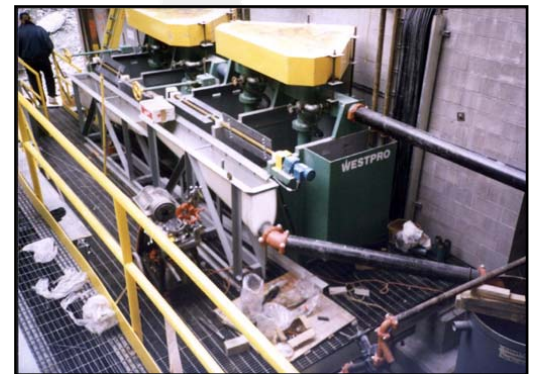
Model	ft <sup>3</sup> / Cell	m <sup>3</sup> / Cell	Motor HP	Examples of Multi-cell Volumes			
				4-Cell ft <sup>3</sup>	6-Cell ft <sup>3</sup>	4-Cell m <sup>3</sup>	6-Cell m <sup>3</sup>
FL .5	0.5	0.014	½ HP	2	3	.056	.084
FL3	3	0.085	3 HP Dual Drive	12	18	0.34	0.51
FL12	12	0.283	5 HP Dual Drive	48	72	1.36	2.04
FL24	24	0.706	10 HP Dual Drive	96	144	2.72	4.08
FL50	50	1.410	15 HP Dual Drive	200	300	5.66	8.50
FL100	100	2.830	15 HP	400	600	11.32	16.99
FL200	200	5.100	40 HP Dual Drive	800	1200	22.64	33.96
FL300	300	8.900	30 HP	1200	1800	34.00	51.00
FL500	500	14.160	50 HP	2000	3000	56.64	84.96



FL500 5-Cell Tank



Heavy Duty Tank



FL50 Installation



300 ft<sup>3</sup> Flotation Mechanism